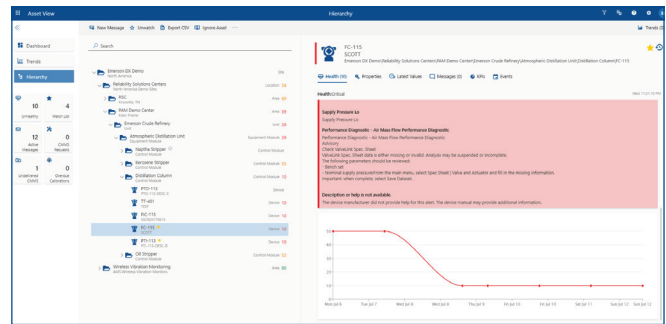


Plantweb Optics Historian

- Store all asset parameters and track performance
- No configuration required to start historizing data
- Identify bad actors
- Trend health for every asset
- Compare parameters across multiple assets



Solution Overview

To improve process reliability, you need to know the current status of your critical assets and also understand how they have performed over time. Being able to trend historical values can provide insights that will help you troubleshoot and identify the root cause faster.

Asset management data needs to be kept in a location where users can analyze the data in context. When you receive an alert about an asset, having immediate access to health and parameter trends provides the context needed to understand and diagnose the alert. By providing historical data, current values, alerts, and messages in one location, you have a holistic view of your asset that provides all the data needed to make an informed decision quickly.

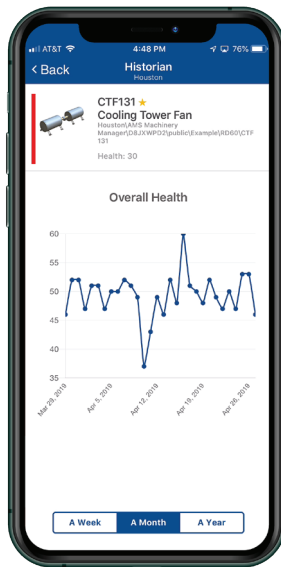
Plantweb Optics actively monitors the health of your assets, and the historian provides the data used to drive action. For example, Plantweb Optics will alert you about a vibration problem on a critical pump. This is an important first step, but you also want to analyze the severity of this alert. The historical trends will provide the quantitative data needed to pinpoint the actual problem, when it started, and how quickly it should be resolved. This is one of many actionable insights provided when you are able to view historical data in context with asset alerts.

Complete Asset History

The Plantweb Optics historian is embedded into every Plantweb Optics asset performance platform. No configuration is required to start storing the history of every parameter of an asset. This ability to store all parameters gives the most complete view of historical health and performance. You can quickly bulk select which assets to historize and store data for up to one million parameters. Because Plantweb Optics historian is already built into the platform, you already have the infrastructure you need to start storing your data.

Mobility

Plantweb Optics is designed to connect experts to their assets through the mobile application. Historical data can be viewed from the mobile application, so you can review the health and parameter trends of your assets from anywhere. When you receive an alert or message about an asset, you can quickly analyze the historical trends to gauge the severity of the issue and determine next steps. Plantweb Optics provides the collaborative environment needed to take your analysis and start driving corrective actions.



User Features

The historian can plot up to 16 parameters per chart and can display up to 4 axes for comparison.

Parameters from multiple assets can be displayed on a single chart to allow for easy comparison between assets. Data from any chart can be easily exported for further analysis.



Flexible Historian Architecture

The Plantweb Optics historian has a flexible architecture built on a NoSQL database that can be deployed in many ways to meet your needs. The historian can be installed on the same server as the Plantweb Optics server or a separate server depending on the number of assets that will be historized. The Plantweb Optics historian offers multiple aggregation methods including best fit, raw, average, maximum, and interpolative data. These methods provide a variety of ways to analyze your data.

The historian is also complete with system backup and recovery. Users have the option for full or partial backup. The full backup will save all parameters and objects and the partial backup allows users to configure the timeframe for backup.

Summary

The Plantweb Optics historian is designed specifically for storing reliability data to increase the visibility into the health and parameters of your assets. With minimal configuration and the ability to store all parameter information associated with an asset, the Plantweb Optics historian provides the insights needed to fully monitor assets. The mobile solution provides access to the information you need wherever you are, as well as the collaborative environment needed to make decisions. The flexible system architecture can accommodate many different network configurations. With Plantweb Optics historian, you can make informed decisions to better drive actions in your facility.

©2020, Emerson. All rights reserved.

The Emerson logo is a trademark and service mark of Emerson Electric Co. All other marks are the property of their respective owners.

The contents of this publication are presented for informational purposes only, and while diligent efforts were made to ensure their accuracy, they are not to be construed as warranties or guarantees, express or implied, regarding the products or services described herein or their use or applicability. All sales are governed by our terms and conditions, which are available on request. We reserve the right to modify or improve the designs or specifications of our products at any time without notice.

Contact Us

 www.emerson.com/contactus