

# BASIC EZ HEATER SYSTEM

## CUSTOMIZATION OPTIONS

Most of Hydro-Thermal's customers require a fully featured EZ Skid package to maximize safety and uptime functionality. The fully featured EZ Skid package offers ultimate flexibility including including internal recirculation, local control, and flow control for fast response to condition changes. However, sometimes an alternative option is preferred if manual control, a simplified design, or lower price are desired. The Basic EZ Heater System fulfills this need. It provides an alternative to the fully featured EZ Skid package so that a plant can get similar heating benefits but with less complex options.

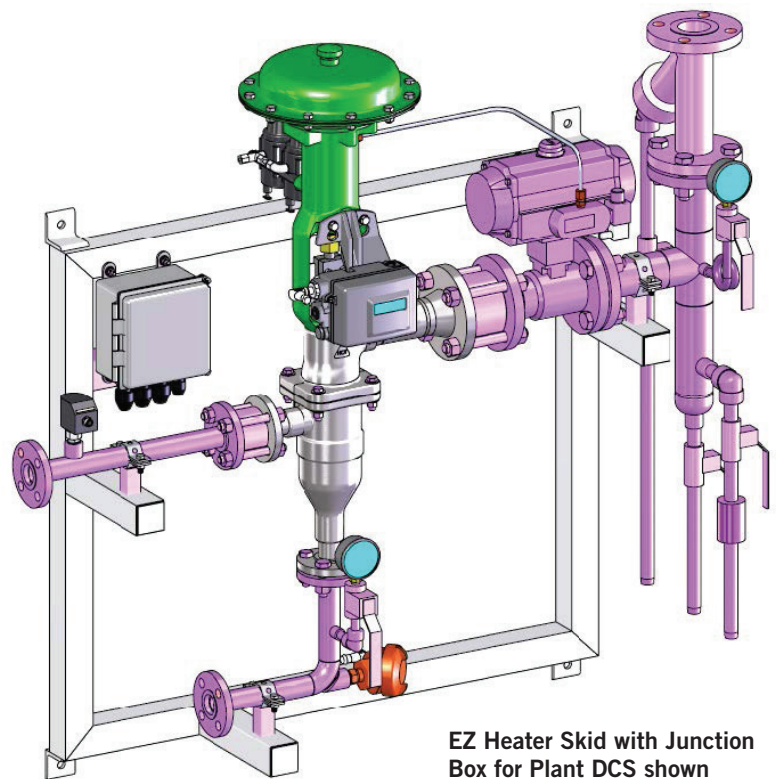
## Benefits

- > Hot water on demand
- > In-line water heating at precise temperatures
- > Customizable solution
- > Exceptional energy savings compared to heat exchangers
- > Small footprint and wall mountable
- > Easy operation\*
- > Positive return on investment
- > Self-cleaning design

## Good for Applications

- > Tank heating(on/off main application)
- > Clean in Place
- > Basic on/off heating for point of use\*
- > Wherever hot water is needed

\*Hose stations or multi-use applications require proper safety and controls



EZ Heater Skid with Junction Box for Plant DCS shown

**Need more information about Hydro-Thermal products?**

Go to [www.hydro-thermal.com](http://www.hydro-thermal.com) or contact us at [info@hydro-thermal.com](mailto:info@hydro-thermal.com)

400 Pilot Court | Waukesha, WI 53188  
(262) 548-8900 | (800) 952-0121

[www.hydro-thermal.com](http://www.hydro-thermal.com)

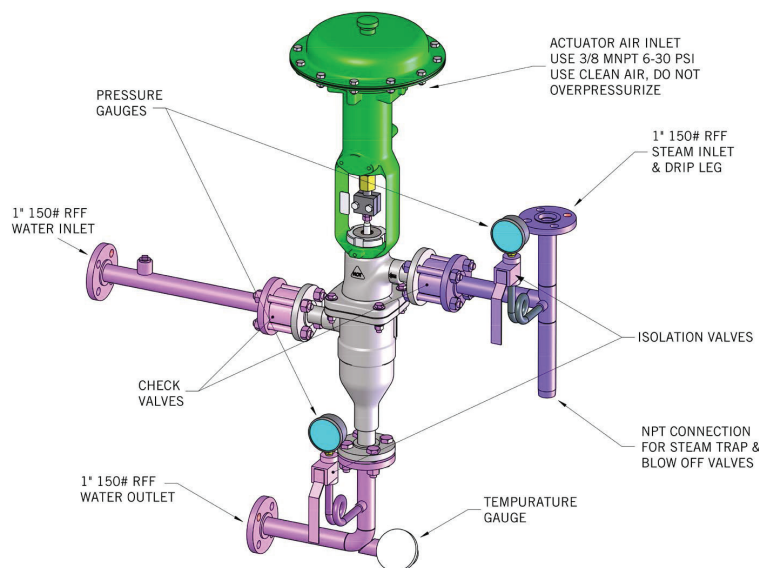
NOH-479 RevE/1-2018

Customers have the option of selecting a Base package – Manual or DCS Controlled Package. Below is a list of the components for each model:

## Base Package – Manual

- > Completely manual – no safety features
- > Basic piping w/check valves to prevent backflow
- > Steam and water pressure gauges
- > Water output temperature gauge
- > All flange connections for servicing and reliability

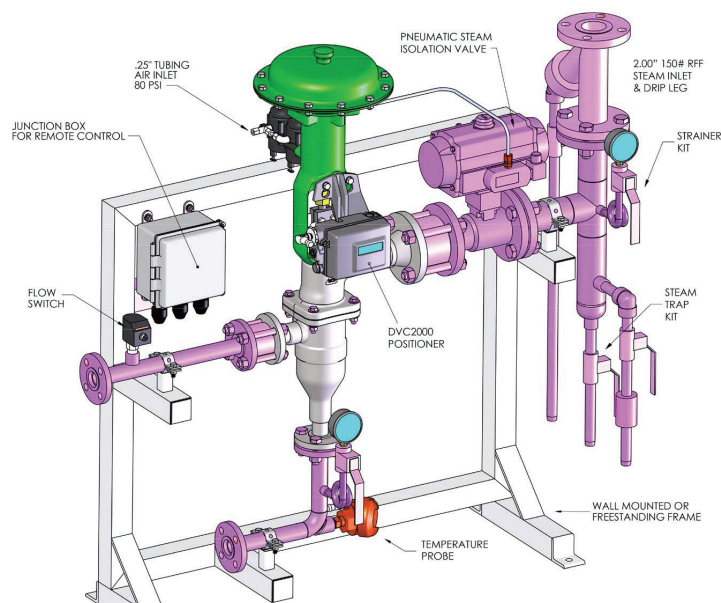
DCS controlled package includes everything that the Base Package – Manual offers, but has the following additional options.



## DCS Controlled Package

(most options shown)

- > Steam safety shut off valve
- > Actuator positioner to control water temperature
- > Output temperature sensor provides signal to DCS
- > Junction box for remote control (DCS) and reliability



### TECHNICAL DETAILS

AIR: 100 PSI

STANDARD PANEL: 230/115 VAC  
50/60HZ

POSITIONER: 4-20MA SIGNAL

STEAM VALVE: 24VDC 80 PSI

HEATER MATERIAL: 316SS

PROCESS PIPING & FRAME  
MATERIAL: 304SS

### ESTIMATED DIMENSIONS\*

MAX. WEIGHT: ~165 lbs.

MAX. WIDTH: 15.5 in.

MAX. LENGTH: 57 in.

MAX. HEIGHT: 50 in.

\*May vary depending on components

### SPECIFICATIONS

FLOW RATE: 2 gpm [0.4 m<sup>3</sup>/h] to  
35 gpm [7.9 m<sup>3</sup>/h]

PRESSURE & TEMPERATURE RATING:  
195 psig  
[13.5 Bar] @ 400°F [204°C]

### OPTIONS & UPGRADES

FRAME  
FLOORSTANDING

WALL MOUNT

STEAM LINE  
Size: 1.00" or 2.00" Strainer kit\*

Material: Carbon Steel or  
Stainless steel Steam trap kit\*\*

CONTROLS (DCS model only):  
Junction Box (for remote control  
from DCS)

HTC's Standard control panel  
for local control

\*Extends life of heater and steam trap by filtering dirty steam | \*\*Removes condensate and contains steam pressure