

**We Look
Forward to an
Opportunity to
Work for You!**



ROUND BUTTERFLY DAMPERS



2000 SERIES

- Standard sizes up to 66"
- Design is to bolt between Class 125/150 flanges.
- Carbon steel, stainless steel, aluminum or special alloy w/ fabricated brackets & stuffing boxes welded to body.
- Maximum pressure drop rating is at ambient temperature and 0°.



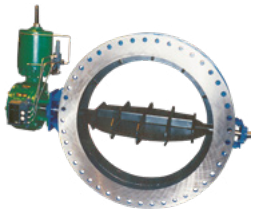
2100 SERIES

- Standard sizes up to 48" for all medium duty services.
- **Body, Disc & Flange:** Carbon Steel, Optional – 304 Stainless Steel
- **Maximum Operating Temperature:** Carbon Steel – 750°F, 304 SS – 1000°F
- **Maximum Static Pressure:** 20 PSIG at ambient
- **Maximum Shut-Off Pressure Drop:** 1 PSI. Std.



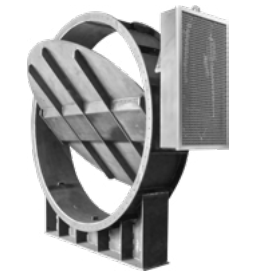
2200 SERIES

- Standard sizes up to 72" designed to bolt between Class 125/150 flanges.
- **Maximum Operating Temperatures:** Up to 2100°F standard, up to 2600°F are optional
- **Maximum Static Pressure:** 50 PSIG
- Blind end stuffing box and blind end outboard ball bearing available as an option.



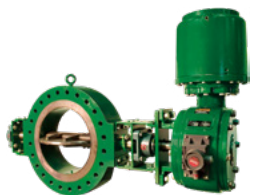
2300 SERIES

- Standard sizes up to 144"
- **Maximum Operating Temperature:** Up to 850°F standard, up to 2600°F optional
- **Maximum Static Pressure:** 50 PSIG
- Flanged design. Rated flanges furnished for any ANSI drilling.
- Sizes 4" to 10" have Sch. 40 wall thickness.
- Blind end bearing standard on size 72" and larger.



2400 SERIES

- Standard sizes to 144"
- **Flanges, Body, & Disc:** Carbon Steel, Optional – Corten, Aluminum, Stainless 300 Series, Carpenter 20, Titanium & Tantalum, FRP Ctd. Stl. (All wetted pts), Refractory lined
- **Shaft:** 304 SS, Optional – SS 300 Series, Alum. & Alum. -Br, Carpenter 20, Titanium & Tantalum, Plastic coated
- **Bushings:** Carbon (3000°F), Optional – Gr. -Br., 17-4 Ph, Stellite, TFE glass filled & Rulon
- **Bearings (Outboard ball):** 72" & above, Optional – Ball & roller (all sizes)
- **Maximum Operating Temperature:** 750°F, Optional – 2300°F
- **Maximum Static Pressure:** 25 PSIG, Optional – 50 PSIG
- **Maximum Shut-Off Pressure Drop:** 1 PSI, Optional – 10 PSI



2500 SERIES

- Standard sizes up to 72" designed w/ flange rating Class 125/150, Optional – 300, 600, 900, 1500 & 2500# ANSI
- **Body & Disc:** Carbon, Optional – Corten, Aluminum, Stainless 300 Series, Carpenter 20, Titanium, Tantalum
- **Shaft:** 304 SS, Optional – Aluminum, 17-4 ph., Stainless 300 Series, Carpenter 20, Titanium, Tantalum
- **Bushings:** Carbon/Graphite, GR, BRZ, Optional – Stainless 300 Series, Stellite, TFE, Glass filled TFE
- **Maximum Operating Temperature:** 750°F, Optional – 3000°F
- **Maximum Static Pressure:** 50 PSIG (depending on size), Optional – 2500
- **Maximum Shut-Off Pressure Drop:** Up to 20 PSI (depending on size), Optional – 300 Maximum



2700 SERIES

- Standard sizes up to 144" (Sizes 4" to 10" have Sch. 40 wall thickness.)
- **Maximum Operating Temperature:** 850°F, Optional – 2600°F
- **Maximum Static Pressure:** 50 PSIG
- Blind end bearing standard on size 72" and larger.
- Standard shaft is stub type. Through shaft is available as an option.
- Sizes 4" to 10" do not have stiffener rings on weld end (37-1/2° Bevel).

DIVERTERS

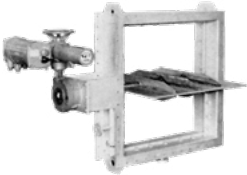
2600 SERIES



- Standard sizes up to 96" w/ ANSI drilled flanges at various thicknesses available.
- **Flanges, Body & Disc:** Carbon Steel, Optional – Corten, Aluminum, Stainless 300 Series, Carpenter 20, Titanium, Tantalum, Refractory Lined Body
- **Shaft:** 304 SS, Optional – Aluminum, Alum. -Br, Stainless 300 Series, Carpenter 20, Titanium, Tantalum
- **Bushings:** Carbon (3000°F), Optional – Gr. Br. Stainless 300 Series, Stellite, TFE, Glass Filled TFE
- **Maximum Operating Temperature:** 750°F, Optional – 2100°F
- **Maximum Static Pressure:** 5 PSIG, Optional – 150 PSIG
- **Maximum Shut-Off Pressure Drop:** 1 PSI, Optional – 50 PSI
- Rolled angle flanges available on medium duty low temperature, low pressure applications.

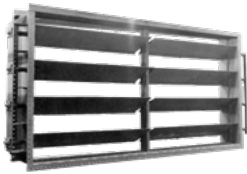
SQUARE & RECTANGULAR BUTTERFLY DAMPERS

3200 SERIES



- **Flanges, Body, Disc & Blades, both Solid & Airfoil:** Carbon Steel, Optional – Corten, Aluminum, Alum. Br, Stainless 300 Series, Carpenter 20, Titanium, Tantalum
- **Shaft:** 304 SS, Optional – Aluminum, Alum. Br, Stainless 300 Series, Carpenter 20, Titanium, Tantalum
- **Bushings:** Carbon, Optional – Gr. Br. 17-4 Ph, Stainless 300 Series, Stellite, Glass TFE filled
- **Maximum Operating Temperature:** 750°F, Optional – 3000°F
- **Maximum Static Pressure:** 5 PSIG, Optional – Contact for Options
- **Maximum Shut-Off Pressure Drop:** 1 PSI, Optional – Contact for Options

3400 SERIES



- **Flanges, Body, Disc & Blades, both Solid & Airfoil:** Carbon Steel, Optional – Corten, Aluminum, Alum. Br, Stainless 300 Series, Carpenter 20, Titanium, Tantalum
- **Shaft:** Carbon Steel, Optional – Aluminum, Alum. Br, Stainless 300 Series, Carpenter 20, Titanium, Tantalum
- **Bearings (Outboard ball):** Standard Ball & Roller
- **Maximum Operating Temperature:** 750°F, Optional – 3000°F
- **Maximum Static Pressure:** 5 PSIG, Optional – Contact for Options
- **Maximum Shut-Off Pressure Drop:** 1 PSI, Optional – Contact for Options

BUBBLE TIGHT/ZERO LEAKAGE BUTTERFLY VALVES

4100 SERIES - EV-O-SEAL



- **Flanges, Body, Disc:** Carbon Steel, Optional – Corten, Aluminum, Alum. Br., Stainless 300 Series, Carpenter 20, Titanium, Tantalum, and any weldable alloy.
- **Shaft:** 304 SS, Optional – Aluminum, Alum. Br., Stainless 300 Series, Carpenter 20, Titanium, Tantalum
- **Bushings:** Graphite, Bronze, Graphitar, Optional – 17-4 Ph, 300 Series SS, Stellite, Glass TFE filled
- **O-Ring:** E.P.D.M, Optional – Neoprene, Teflon, Silicone, Viton, Buna 'N'
- **Maximum Operating Temperature:** 300°F, Optional – 500°F
- **Maximum Static Pressure:** 50 PSIG, Optional – 60 PSIG
- **Maximum Shut-Off Pressure Drop:** 25 PSI, Optional – 50 PSI
- Class V leakage

4300 SERIES - FLATE-O-SEAL



- **Flanges, Body, Disc:** Carbon Steel, Optional – Corten, Aluminum, Alum. Br., Stainless 300 Series, Carpenter 20, Titanium, Tantalum, and any weldable alloy.
- **Shaft:** 304 SS, Optional – Aluminum, Alum. Br., Stainless 300 Series, Carpenter 20, Titanium, Tantalum
- **Bushings:** Carbon, Optional – Gr. Br., 17-4 Ph, Stainless 300 Series, Stellite, Glass TFE filled
- **Seat:** E.P.D.M & Neoprene, Optional – Viton
- **Maximum Operating Temperature:** 300°F, Optional – 400°F
- **Maximum Static Pressure:** 25 PSIG, Optional – 30 PSIG
- **Maximum Shut-Off Pressure Drop:** 1 PSI, Optional – 50 PSI

GATE VALVES

5000 SERIES - BONNETED & 5100 SERIES BONNETLESS



Slide Gate dampers include the 5000 Series (Bonnet) and the 5100 Series (Bonnetless). Slide Gates are designed mainly for on/off services and are mostly used for shut-off. Refractory Lined Gate valves are available for high temperature applications.

- Standard sizes range from 6-72"
- **Constructed Metal:** Carbon Steel, Optional – Corten, Aluminum, Alum. Br, Stainless 300 Series, Carpenter 20, Titanium, Tantalum